



**Keiga Electronic Inc.**

8F-1, No. 176, Jian 1st Road, Zhonghe Dist.,  
New Taipei City 23553, Taiwan (R.O.C.)

**Audio Amplifier JDM, ODM & OEM**

Home, Commercial, Automotive, Marine, RV, PC and Speaker Integration Systems

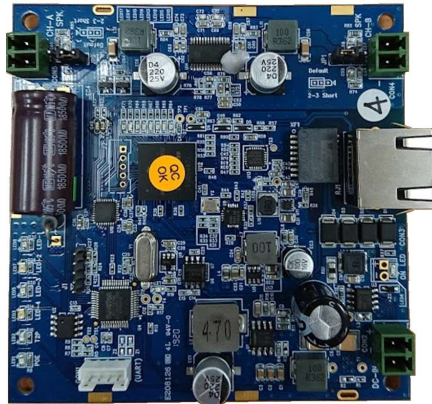
TEL#: +886-2-8227-1020

Fax#: +886-2-8227-1070

V6.0 June ©2020

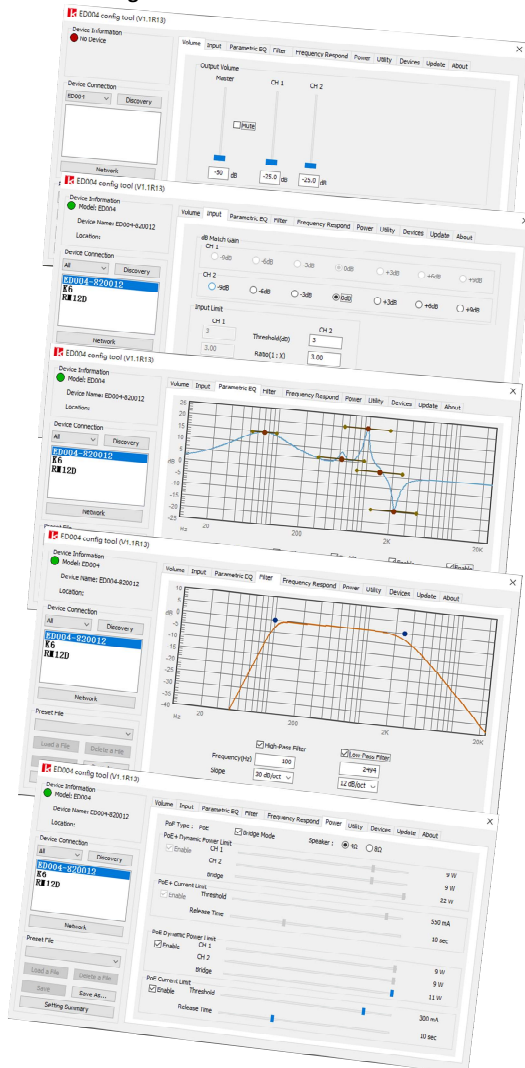
**Confidential**

# 71W PoE/PoE+/PoE++ DANTE™ AUDIO AMPLIFIER BOARD (ED-005) 22W PoE/PoE+ DANTE™ AUDIO AMPLIFIER BOARD (ED-004)



ED-004 shown

## KAP™ configuration



## INTRODUCTION

Compatible with AES67 standard, ED-005 and ED-004 are two simple plug and play 71W and 22W PoE Dante™ Ultimo chipset built-in audio DSP amplifier boards with a single RJ45 connection to receive digital audio signals from the Dante™ network and PSE compliant power over Ethernet up to 90W IEEE 802.3af/at/bt Type4 (PoE/PoE+/PoE++) for ED-005 and 30W IEEE 802.3af/at (PoE/PoE+) for ED-004.

These boards are designed to be integrated inside a speaker or with a speaker system.

Coupling with KAP™ software, both ED-005 and ED-004 are designed to implement with extremely easy to install and configure to gain high audio DSP performance as well as safeguard the passive speaker(s) they are driving. The Windows based KAP™ software, manages these PoE amps' built-in audio DSP features include the basic Volume control, Input Gain, Parametric Equalize, Filter and power to the advanced OTP, OTP, OVP, Auto Recovery, Surge Protection, etc. In addition, KAP™ software can also conform the power usages to achieve the best balance of the maximum audio outputs and the safest power.

## FEATURES

- Dante™ Ultimo insides with hi performance Class D Audio DSP Amplifier
- Built-in KAP™ (Keiga Audio Performance) software to configure audio DSP
- KAP™ provides "Find-me" ping signal for easy location identification
- KAP™ tools can save and load the speaker profiles saving installation time & efforts
- Audio DSP provides up to 5 sets of PEQ setting for each channel
- One RJ45 connection for the Dante™ audio signals and PoE power network
- ED-004 supports both IEEE 802.11af/at (PoE/PoE+) and Local DC-In power input
- ED-005 supports both IEEE 802.3af/at/bt (PoE/PoE+/PoE++) and local DC-In
- Supports Dante™ Domain Manager and AES67 compliant
- Auto detect PoE++ (90W), PoE+ (30W) or PoE (15W) power levels
- Fully protection with OTP, OTP, OVP, Auto Recovery and Surge Protection
- 5 LED status display for PoE status and channel signal and peak.

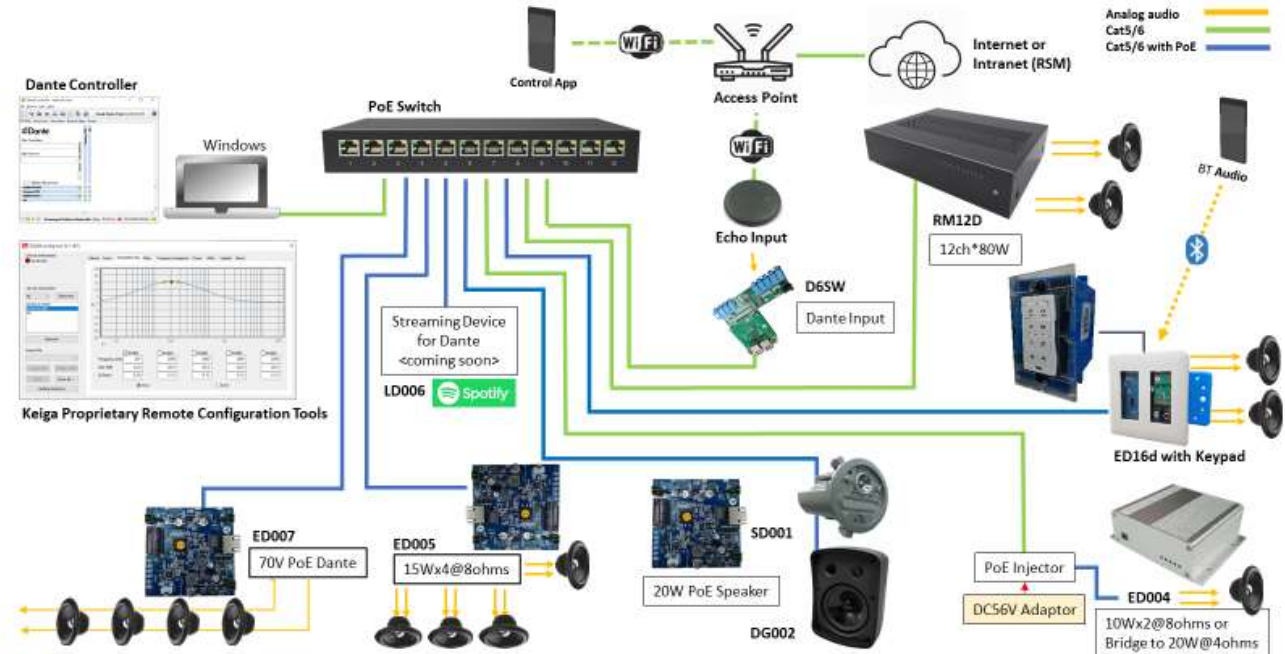
## SPECIFICATIONS

- ED-004, Maximum supports 11Wx2@8Ω or PBTL mode for 22W@4Ω
- ED-005 Maximum supports 35.5Wx2@8Ω or PBTL mode for 71W@4Ω
- Built in Audio DSP for Volume, PEQ, Filter and Input Gain controls
- Dante™ Receiver as the audio input
- 2 sets two pins Euro-block Speaker output
- Signal Noise Ratio: ~ 93 dB
- Crosstalk in stereo mode: ~ - 64 dB
- THD + N (full power): < 0.5%
- Measure size: 90 (W) x 90 (D) mm

## PRODUCT FAMILY

- **ED-22** PoE/PoE+ Dante Audio Amplifier Endpoint Device
- **ED-71** PoE/PoE+/PoE++ PoE Dante Audio amplifier Endpoint Device
- **ED-007** 70W PoE/PoE+ Dante Audio Amplifier Board
- **RM-12D** 1000W 12ch Dante Matrix Distribution Amplifier (Rack-mountable)
- **RH-2004** 2000W 4ch 70/100V 4Ω Dante Distribution Amplifier (Rack-mountable)
- **D6SW** Dante Audio Receiver/Selector
- **EI90** PoE++ 90W PSE Injector Board
- **ESDC** DC5V/12V Converter Board
- **SD-001** 20W PoE+ Speaker
- **DG-002** 20W PoE+ Speaker

## Centralized PoE Dante Ecosystem (one PoE Switch)



## Distributed PoE Dante Ecosystem (multiple PoE Switches)

