



Keiga Electronic Inc.

8F-1, No. 176, Jian 1st Road, Zhonghe Dist.,
New Taipei City 23553, Taiwan (R.O.C.)

Audio Amplifier JDM, ODM & OEM

Home, Commercial, Automotive, Marine, RV, PC and Speaker Integration Systems

TEL#: +886-2-8227-1020

Fax#: +886-2-8227-1070

V7.0 June ©2020

Confidential

71W PoE/PoE+/PoE++ DANTE™ AUDIO AMPLIFIER

(ED-71)

22W PoE/PoE+ DANTE™ AUDIO AMPLIFIER

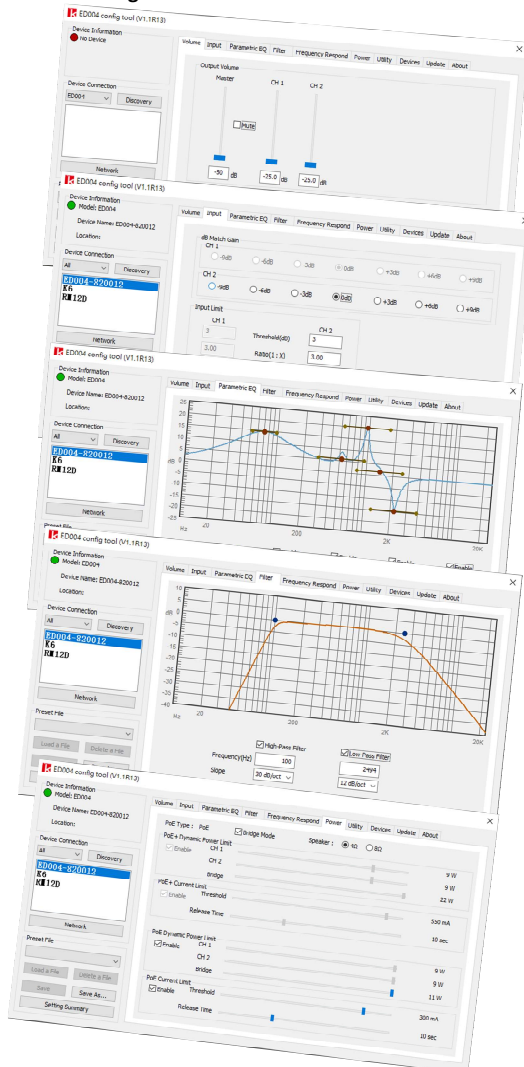
(ED-22)



Available in silver or
Black colors



KAP™ configuration



INTRODUCTION

Compatible with AES67 standard, ED-71 and ED-22 are two simple plug and play 71W and 22W PoE Dante™ Ultimo chipset built-in audio DSP amplifiers with a single RJ45 connection to receive digital audio signals from the Dante™ network and PSE compliant power over Ethernet up to 90W IEEE 802.3af/at/bt Type4 (PoE/PoE+/PoE++) for ED-71 and 30W IEEE 802.3af/at (PoE/PoE+) for ED-22.

Coupling with KAP™ software, both ED-71 and ED-22 are extremely easy to install and configure to gain high audio DSP performance as well as safe-guard the passive speaker(s) they are driving. The Windows based KAP™ software, manages these PoE amps' built-in audio DSP features include the basic Volume control, Input Gain, Parametric Equalize, Filter and power to the advanced OTP, OTP, OVP, Auto Recovery, Surge Protection, etc. In addition, KAP™ software can also conform the power usages of ED-71 and ED-22 to achieve the best balance of the maximum audio outputs and the safest power leverages.

FEATURES

- Dante™ Ultimo insides with hi performance Class D Audio DSP Amplifier
- Built-in KAP™ (Keiga Audio Performance) software to configure audio DSP
- KAP™ provides "Find-me" ping signal for easy location identification
- KAP™ tools can save and load the speaker profiles saving installation time & efforts
- Audio DSP provides up to 5 sets of PEQ setting for each channel
- One RJ45 connection for the Dante™ audio signals and PoE power network
- ED-22 supports both IEEE 802.11af/at (PoE/PoE+) and Local DC-In power input
- ED-71 supports both IEEE 802.3af/at/bt Type 4 (PoE/PoE+/PoE++) and local DC-In
- Supports Dante™ Domain Manager and AES67 compliant
- Auto detect PoE++ (90W), PoE+ (30W) or PoE (15W) power levels
- Fully protection with OTP, OTP, OVP, Auto Recovery and Surge Protection
- 5 LED status display for PoE status and channel signal and peak.

SPECIFICATIONS

- ED-22, Maximum supports 11Wx2@8Ω or PBTL mode for 22W@4Ω
- ED-71 Maximum supports 35.5Wx2@8Ω or PBTL mode for 71W@4Ω
- Built in Audio DSP for Volume, PEQ, Filter and Input Gain controls
- Dante™ Receiver as the audio input • 2 sets two pins Euro-block Speaker output
- Signal Noise Ratio: ~93 dB • Crosstalk in stereo mode: ~ -64 dB
- THD + N (full power): < 0.5%
- Measure size: 114 (W) x 93(D) x 38(H) mm and Weight: 250g.

PRODUCT FAMILY

- **ED-004** PoE/PoE+ Dante Audio Amplifier Board
- **ED-005** PoE/PoE+/PoE++ PoE Dante Audio amplifier Board
- **ED-007** 70W PoE/PoE+ Dante Audio Amplifier Board
- **RM-12D** 1000W 12ch Dante Matrix Distribution Amplifier (rack-mountable)
- **RH-2004** 2000W 4ch 70/100V 4Ω Dante Distribution Amplifier (rack-mountable)
- **D6SW** Dante Audio Receiver/Selector
- **EI90** PoE++ 90W PSE Injector Board • **ESDC** DC5V/12V Converter Board
- **SD-001** 20W PoE+ Speaker • **DG-002** 20W PoE+ Speaker

