



**Keiga Electronic Inc.**

8F-1, No. 176, Jian 1st Road, Zhonghe Dist.,  
New Taipei City 23553, Taiwan (R.O.C.)

**Audio Amplifier JDM, ODM & OEM**

Home, Commercial, Automotive, Marine, RV, PC and Speaker Integration Systems

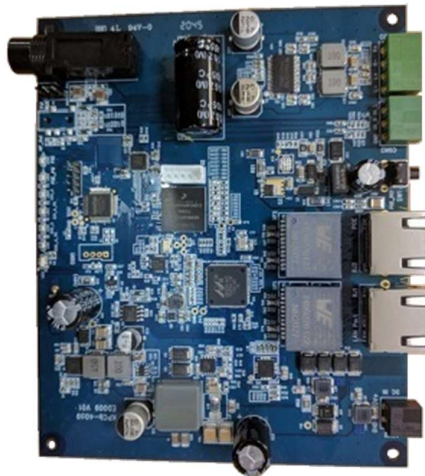
TEL#: +886-2-8227-1020

Fax#: +886-2-8227-1070

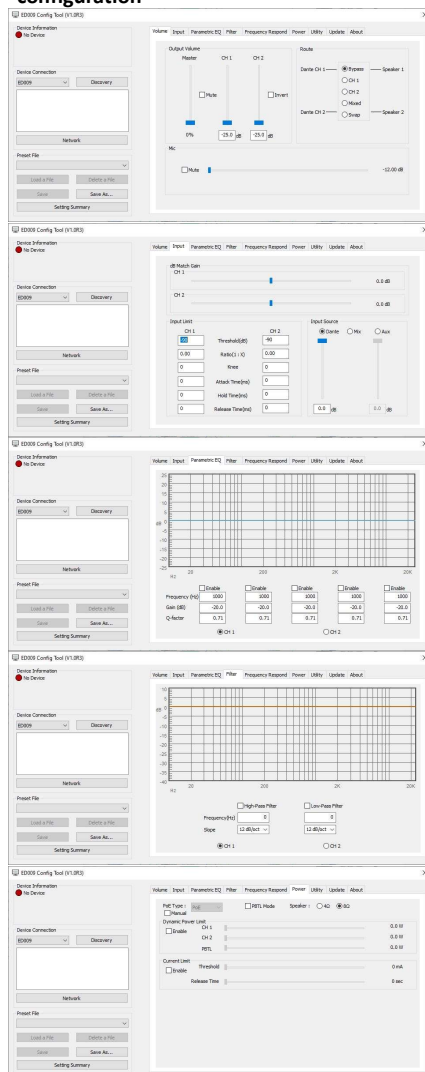
V3 August ©2021

**Confidential**

# 71W PoE++ 2-Ch DANTE™ AUDIO AMPLIFIER BOARD WITH 90W PSE DAISY CHAIN CAPABILITY (ED-009)



## KAP™ configuration



## INTRODUCTION

Compatible with AES67 standard, Keiga ED-009 is a simple plug-and-play 71-watt 2-ch PoE Dante™ Ultimo chipset built-in audio DSP amplifier board with a single RJ45 connection to receive both digital audio signals from the Dante™ network and PSE compliant power over Ethernet up to 90W IEEE 802.3af/at/bt Type4 (PoE / PoE+ / PoE++). One really special design of this Keiga ED-009 is a 2<sup>nd</sup> RJ45 connection that allows a 90W power as PSE (Power Sourcing Equipment) to be daisy-chained to the next PoE devices. It also has a 6.3mm microphone input as Dante audio in.

Coupling with Keiga Audio Performance software, KAP™, ED-009 becomes intuitively easy to install and to configure for gaining high audio DSP performance as well as preventing any overdrives of the passive speaker(s) it is connecting. The Windows based KAP™ software manages all Keiga PoE amps' built-in audio DSP features including the Volume Controls, Input Gains, Parametric Equalizers, and Filters. In addition, KAP™ software can also conform the power usages to achieve the best balance of the maximum audio outputs and the highest power consumptions with the advanced functions such as OTP, OTP, OVP, Auto Recovery, Surge Protection, GPIO Control and Monitor, etc.

## FEATURES

- Dante™ Ultimo insides with hi performance Class D Audio DSP Amplifier
- Built-in KAP™ (Keiga Audio Performance) software to configure audio DSP
- KAP™ provides "Find-me" ping signal for easy location identification
- KAP™ tools can save and load the speaker profiles saving installation time & efforts
- Audio DSP provides up to 5 sets of PEQ setting for each channel
- One RJ45 connection for the Dante™ audio signals and PoE power network
- 2<sup>nd</sup> RJ45 connection for daisy chain 90W power to other PoE devices
- Supports both IEEE 802.3af/at/bt (PoE/PoE+/PoE++) and local DC-In
- Dante™ Domain Manager and AES67 compliant
- Auto detect PoE++ (90W), PoE+ (30W) or PoE (15W) power levels
- Built in 6.3mm microphone input as Dante audio in
- Fully protection with OTP, OTP, OVP, Auto Recovery and Surge Protection
- 5 LED status display for PoE status and channel signal and peak.

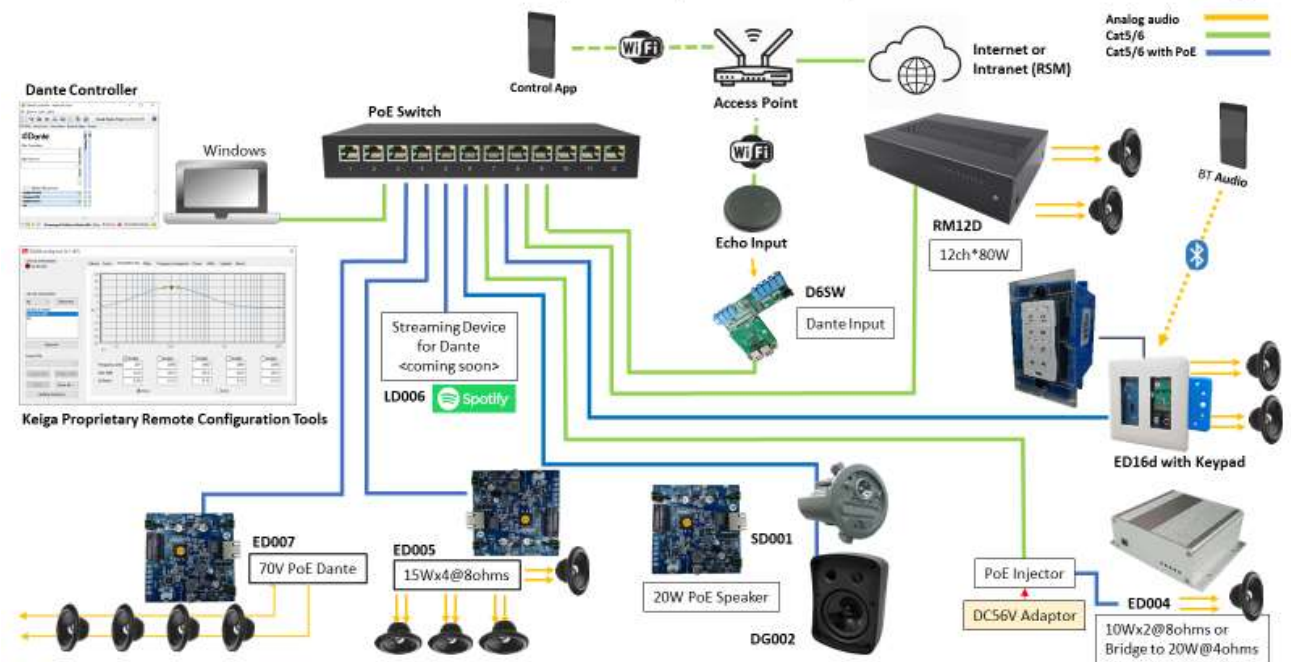
## SPECIFICATIONS

- ED-009 Maximum supports 35Wx2@8Ω or PBTL mode for 70W@4Ω
- PSE 90W output via RJ45 (share with the audio amplifier power)
- Built in Audio DSP for Volume, PEQ, Filter and Input Gain controls
- Dante™ Receiver as the audio input
- Signal Noise Ratio: ~ 91 dB
- THD + N (full power): < 0.5%
- 4 sets two-pin Euro-block Speaker output
- Crosstalk in stereo mode: ~ - 61 dB
- Measure size: 134 (W) x 110 (D) mm

## PRODUCT FAMILY

- **ED-004/22** 22W 2CH PoE/PoE+ Dante Audio Amplifier Board/Endpoint Device
- **ED-005/71** 71W 2CH PoE/PoE+/PoE++ PoE Dante Audio amplifier Board/Device
- **ED-007** 70W PoE/PoE+ Dante Audio Amplifier Board
- **ED-008** 71W 4CH PoE/PoE+/PoE++ PoE Dante Audio amplifier Board
- **RM-12D** 1000W 12ch Dante Matrix Distribution Amplifier (Rack-mountable)
- **RH-2004** 2000W 4ch 70/100V 4Ω Dante Distribution Amplifier (Rack-mountable)

## Centralized PoE Dante Ecosystem (one PoE Switch)



## For you to built up a PoE Dante ECO system

